

8.

SELECTED HIGH-RISE PROJECTS



SELECTED HIGH-RISE PROJECTS

Holiday Inn Pudong Kangqiao – Shanghai, China

Architect: CSYA

Developer: SPG Hotel Investment & Development

Description: Town Centre, Hotel, Mall, Spa & Food Court

Total Construction Cost: US\$ 320 Million

Completion Date: 2010



Northpoint – Pattaya, Thailand

Architect: HB Design

Developer: RaimonLand

Description: Tall and slender residential towers in shear wall and pre-stressed flat slab construction

Total Construction Cost: S\$ 125 Million

Completion Date: 2009



The Troika – Kuala Lumpur, Malaysia

Architect: Foster + Partners

GDP Architects

Developer: Bandar Raya Development

Description: 3 towers of 50, 44 and 39-storey on a 4-storey basement. Hailed as the tallest residential tower in Malaysia, in this harmonious merger of architecture and structure

Total Construction Cost: RM 300 Million

Completion Date: 2010

Winner of RIBA Worldwide Award 2012



Victory Valley – Gurgaon, India

Architect: WOW Architects

Developer: IREO

Description: At 51 storeys, this residential tower is the tallest building in Delhi and the whole of North India. It is situated in the second highest seismic zone in the world

Total Construction Cost: TBC

Completion Date: 2015



Lincoln Modern Apartments – Singapore

Architect: SCDA

Developer: SC Global Developments

Description: At a maximum height-over-width ratio of 13, this 30-storey apartment block is the most slender reinforced concrete frame of its kind in Singapore

Total Construction Cost: S\$ 22 Million

Completion Date: 2003

Winner of RIBA Worldwide Awards 2005



SELECTED HIGH-RISE PROJECTS

Queenstown Peak – Singapore

Architect: RSP Architects Planners & Engineers

Developer: Allgreen Properties

Description: At 40-storeys high, the Queens was hailed as the tallest condominium in Singapore

Total Construction Cost: S\$ 120 Million

Completion Date: 2001

Winner of BCA Best Buildable Design Award 2003



Baywater Condominium – Singapore

Architect: TAA Architects

Developer: Allgreen Properties

Description: 4 blocks of 18-storey condominium

Total Construction Cost: S\$ 45 Million

Completion Date: 2005

Winner of BCA Construction Excellence Awards 2008



Ardmore Residence – Singapore

Architect: UNStudio

Developer: Pontiac Land Group

Description: In this fluid design of a 36-storey apartment by UNStudio, the structure becomes a parameter in a network of possibilities, generated by parametric design processes. The structure melts into the architectural form

Total Construction Cost: S\$ 95 Million

Completion Date: 2013



Tokio Marine Centre – Singapore

Architect: CSYA

Developer: Tokio Marine Asia Insurance

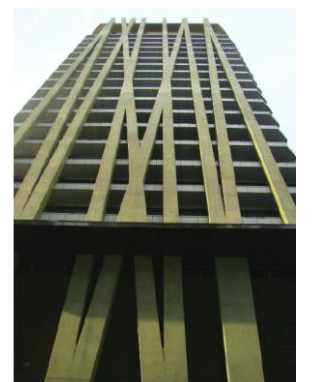
Description: 22-storey office building with an exo-skeletal structural frame.

Headquarters of Tokio Marine Insurance

Total Construction Cost: S\$ 70 Million

Completion Date: 2010

BCA Green Mark Goldplus Award 2008



338 Residence – Singapore

Architect: WOW Architects

Developer: Springstar Properties

Description: A flat plate transfer structure at second storey level enables the column-free entrance foyer for this condominium with highly organic floor plates

Total Construction Cost: S\$ 12.8 Million

Completion Date: 2004



SELECTED HIGH-RISE PROJECTS

The Arris – Singapore

Architect: William Lim Associates

Developer: RDC Properties

Description: Structure of 'Planes' of reinforced concrete walls and flat plates of 'steel and glass' in harmony with the architecture

Total Construction Cost: S\$ 15 Million

Completion Date: 2003



YTL Headquarters – Kuala Lumpur, Malaysia

Architect: Foster + Partners

GDP Architects

Developer: YTL

Description: 50-storey office building in the heart of Kuala Lumpur. The form of the building is generated from the awkward geometry of the site. Shaped like a jagged shard, the site has a finger extended from it that terminates at a narrow street frontage along Jalan Bukit Bintang

Total Construction Cost: TBC

Completion Date: TBC



Hotel Maya – Kuala Lumpur, Malaysia

Architect: CSYA

Developer: SDB Properties

Description: A mixed development of a hotel, an office building and a service office designed around a central atrium

Total Construction Cost: RM 80 Million

Completion Date: 1997 (major refurbishment in 2005)



Park Seven – Kuala Lumpur, Malaysia

Architect: CSYA

Developer: SDB Properties

Description: Park Seven is a luxury development in close proximity to Kuala Lumpur City Centre. It comprises of seven blocks planned radially in two interconnected clusters with each unit occupying the entire floor, which maximizes the surrounding view of the city centre

Total Construction Cost: RM 120 Million

Completion Date: 2008



EVN Tower – Ho Chi Minh City, Vietnam

Architect: Hamiltons International

Developer: N/A

Description: Competition for a Green Tower in Vietnam

Total Construction Cost: TBC

Completion Date: TBC



SELECTED HIGH-RISE PROJECTS

The Katana Residences – Kuala Lumpur, Malaysia

Architect: SCDA

Developer: Katana Development

Description: 10-storey high apartments consisting of 24 duplex apartments and 6 super triplex penthouses boasting an architectural foundation that uses 3D interlocking modules, a landmark concept in Malaysia

Total Construction Cost: RM 40 Million

Completion Date: 2007



Grand Hyatt Hotel – Kuala Lumpur, Malaysia

Architect: WATG

GDP Architects

Developer: Bahagia Investment

Description: 42-storey mixed development of hotel, offices and serviced apartments on a 2-storey basement

Total Construction Cost: RM 320 Million

Completion Date: 2012



Menara Binjai – Kuala Lumpur, Malaysia

Architect: VERITAS

Developer: Khor Joo Saik

Description: 39-storey office tower

Total Construction Cost: RM 130 Million

Completion Date: 2012

BCA Green Mark Gold Award 2010



Acadia – Kuala Lumpur, Malaysia

Architect: TsAO & McKOWN

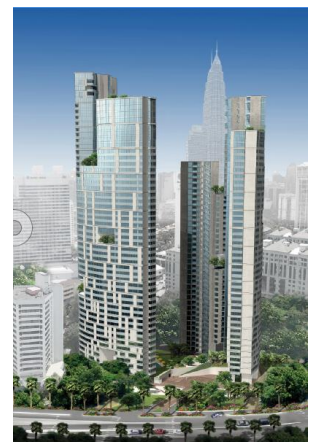
GDP Architects

Developer: IMC Parkville

Description: Two curving residential towers of 50-storey lightly embrace a central garden terrace, recalling a serene, tropical oasis

Total Construction Cost: RM 350 Million

Completion Date: TBC



Katana 2 – Kuala Lumpur, Malaysia

Architect: W Architects

Developer: Katana Development

Description: This property features contemporary tropical architecture that revolves around the concept of an ancient Chinese courtyard. Setting new benchmarks in innovative habitat concepts, Katana II comprises a chic 10-storey high mix of Townhouses, Sky Duplexes, Designer Lofts and Super Triplexes, and totals just 40 units

Total Construction Cost: RM 47 Million

Completion Date: 2011



SELECTED HIGH-RISE PROJECTS

Summer Suites – Kuala Lumpur, Malaysia

Architect: DP Architects

Developer: Summer Lodge

Description: Two towers of 40-storey office and residential development

Total Construction Cost: RM 150 Million

Completion Date: 2014



Kenny Heights Parcel 2A – Kuala Lumpur, Malaysia

Architect: Kengo Kuma

Developer: KH Land

Description: A 14-storey condominium on a 3-storey basement

Total Construction Cost: TBC

Completion Date: 2012



Kenny Heights Parcel 3 and Parcel 8 – Kuala Lumpur, Malaysia

Architect: Foster + Partners

Conran & Partners

Adjaye Associate

Benoy

GHGA

Developer: KH Land

Description: Proposed mixed development of retail, offices and residential real estate in three 50-storey and one 70-storey towers

Total Construction Cost: RM 500 Million

Completion Date: TBC



Bazis-Jomtien – Pattaya, Thailand

Architect: HB Design

Developer: Bazis

Description: Mixed development of residential, hotel and service apartments in three towers of 35, 45 and 55-storey

Total Construction Cost: S\$ 150 Million

Completion Date: TBC



Grand Hotels – Kuala Lumpur, Malaysia

Architect: DCM Studios

GHGA

Developer: DutaLand

Description: 52-storey mixed development of office, hotel and service apartments

Total Construction Cost: RM 500 Million

Completion Date: TBC



SELECTED HIGH-RISE PROJECTS

Bank of East Asia – Singapore

Architect: Teh Joo Heng Architects

Developer: AsiaEquity Partners

Description: Headquarters of Bank of East Asia in Singapore

Total Construction Cost: S\$ 20 Million

Completion Date: 2009



Mulpha HQ Tower – Kuala Lumpur, Malaysia

Architect: Kohn Pedersen Fox Associate

VERITAS

Developer: Mulpha International

Description: A 29-storey office tower on a 5-storey basement

Total Construction Cost: TBC

Completion Date: TBC



World Trade Center (Tower 1) – New York, USA

Architect: N.A.

Developer: Conspec Singapore

Description: Specialist façade engineering services

Total Construction Cost: N/A

Completion Date: 2014



CyberCity Tower – Mauritius

Architect: HOK

Developer: Gamma Civic Ltd

Description: 30-storey development building

Total Construction Cost: TBC

Completion Date: TBC



Atmosphere – Kolkata, India

Architect: Arc Studio Architecture + Urbanism

Developer: Forum Projects

Description: Two residential towers rising 37 floors above ground linked by a 3-storey skyclub spanning 60 meters between them, at 30 floors above ground

Total Construction Cost: TBC

Completion Date: 2015



SELECTED HIGH-RISE PROJECTS

Marvel Kyra – Pune, India

Architect: HB Design

Developer: Marvel Realtors and Developers

Description: 30-storey residential tower located in Indian Seismic Zone 3

Total Construction Cost: TBC

Completion Date: 2014



Hilton Hotel – Ulaan Baatar, Mongolia

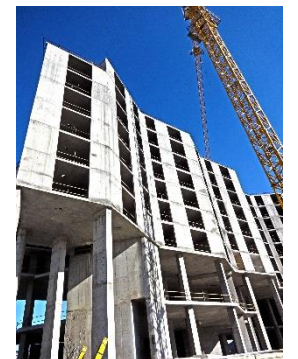
Architect: Mimolimit

Developer: Star Estates

Description: Proposed Hilton Hotel

Total Construction Cost: US\$ 70 Million

Completion Date: 2015



Arcoris Mont'Kiara – Kuala Lumpur, Malaysia

Architect: Foster + Partners

GDP Architects

Developer: Sunrise Berhad

Description: 30-storey hotel and 18-storey apartment blocks comprising pocket units, arranged and stacked to dramatize structural manipulation and expression

Total Construction Cost: RM 650 Million

Completion Date: 2018



Platinum Park – Kuala Lumpur, Malaysia

Architect: Foster + Partners

Developer: Naza TTDI

Description: Slender 60-storey hotel, with only the lift coming down to the ground, with floor plates spanning 27m from one core to another

Total Construction Cost: TBC

Completion Date: 2013



Queen's Place – Ho Chi Minh City, Vietnam

Architect: BEP Akitek

Developer: IREKA Corporation

Description: Mixed 20-storey development

Total Construction Cost: TBC

Completion Date: TBC



SELECTED HIGH-RISE PROJECTS

High-Specification Residential Development – Mumbai, India

Architect: Arc Studio Architecture + Urbanism

Developer: Forum Projects

Description: High-specification residential development in one of the most sought after areas in Mumbai. The total gross floor area is around 400,000ft² and 25-storeys high

Total Construction Cost: TBC

Completion Date: TBC



Tivoli Park Apartment – Kolkata, India

Architect: SCDA

Developer: Forum Projects

Description: High specification high-rise (around 50-storeys) apartments development on a site area of 12,323m² in Kolkata

Total Construction Cost: TBC

Completion Date: TBC



Super Tall Tower – Taichung, Taiwan

Architect: Paolo Cucchi Architects

Developer: N/A

Description: Competition entry for a well over 300m tall tower in Taiwan

Total Construction Cost: N/A

Completion Date: N/A



The Symmetry – Kuala Lumpur, Malaysia

Architect: Arc Studio Architecture + Urbanism

Developer: Naza TTDI

Description: Mixed development consisting of retail and residential components in Kuala Lumpur, near the Petronas Towers. The project includes 2 towers of 40-storey each, joined together in an organic shape forming an apparently single building in a curvilinear “envelope”

Total Construction Cost: TBC

Completion Date: TBC



Hamilton Scotts – Singapore

Architect: eco.id

Developer: Sardinia Properties

Description: 30-storey apartment on a 2-storey basement featuring the tallest en suite sky car porch in the world

Total Construction Cost: S\$ 80 Million

Completion Date: 2012



SELECTED HIGH-RISE PROJECTS

Equatorial Plaza – Kuala Lumpur, Malaysia

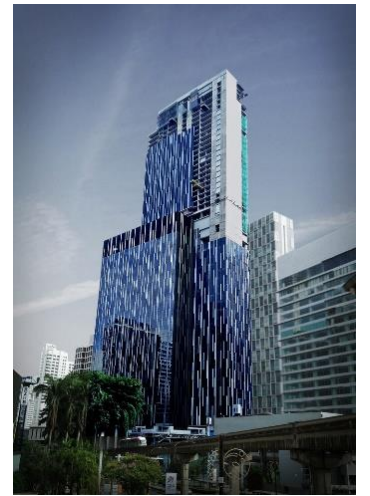
Architect: GDP Architects

Developer: Hotel Equatorial

Description: A mixed use hotel and office development, recovering and reusing waste, heat, energy and water to create a closed loop building with minimal environmental impact

Total Construction Cost: RM 450 Million

Completion Date: 2019



Windows on the Park – Selangor, Malaysia

Architect: GDP Architects

Developer: SDB Properties

Description: One medium cost apartment block of 33 storeys and two luxury apartment blocks of 15 and 17 storeys including two basements and two podium car park levels and residents' amenities

Total Construction Cost: RM 430 Million

Completion Date: 2015



Dunhua Tower – Taipei, Taiwan

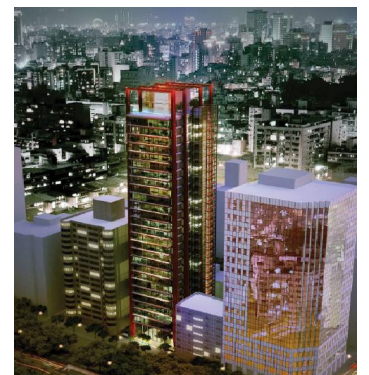
Architect: RSH+P

Developer: Ting Ho Developments Co. Ltd Taiwan

Description: Proposed 28-storey tower with a 3-storey rooftop pavilion in quake prone seismic zone in Taiwan

Total Construction Cost: TBC

Completion Date: TBC



SJ 7 “TOD” – Kuala Lumpur, Malaysia

Architect: Gensler Architects

RSP Architects

Developer: Syarikat Perumahan Guthrie

Description: 2 towers of service apartments on top of a park-and-ride podium car park and retail, with 3 levels of basement car parks.

Total Construction Cost: RM 386 Million

Completion Date: TBC



Arzuria – Jakarta, Indonesia

Architect: SCDA

Developer: Tolaram group

Description: Two luxury 32-storey residential buildings

Total Construction Cost: TBC

Completion Date: TBC



SELECTED HIGH-RISE PROJECTS

Golden Ginger – Singapore

Architect: CSYA

Developer: Housing Development Board

Description: Two blocks of 14 storey HDB for 160 units designed exclusively for residents above 55 years old, with a provision of Senior Activity Centre, Communal Garden, Children Playground, and Fitness Corners on the two-tier garden deck above a multi-storey car park

Total Construction Cost: TBC

Completion Date: 2016



Segambut – Kuala Lumpur, Malaysia

Architect: BEP Akitekt

Developer: Able Group

Description: Two apartment towers each 38 storeys, 22 duplex villas and car parks on 5 acres

Total Construction Cost: TBC

Completion Date: TBC



Bukit Bintang City Centre – Kuala Lumpur, Malaysia

Architect: GDP Architects

Developer: Eco World

Description: The mixed development includes a 46-storey strata office tower, hotel, apartment towers, Zepp hall by Sony, office towers all linked to a common 4-level basement and 5-storey podium

Total Construction Cost: RM 510 Million

Completion Date: TBC



Mall of Medini – Johor, Malaysia

Architect: SA Architects

Developer: Sunrise Project Services Sdn Bhd

Description: Mixed Use Commercial Development Of Phase 2, Phase 3 And Phase 4 Of Mall Of Medini in Iskandar

Total Construction Cost: TBC

Completion Date: TBC



Belfield Phase 3 – Kuala Lumpur/Malaysia

Architect: GDP Architects

Developer: Belfield Sdn Bhd

Description: About 800,000 ft² of residential towers, 59 storey and 38 storey high on top of a 8 storey podium with 2 levels of basement

Total Construction Cost: TBC

Completion Date: TBC



SELECTED HIGH-RISE PROJECTS

Jalan Senopati – Jakarta, Indonesia

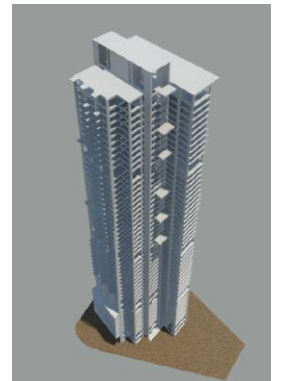
Architect: WOHA

Developer: BUVA Group

Description: Proposed residential, service apartment and Hotel development

Total Construction Cost: TBC

Completion Date: TBC



Fubon tower – Taipei, Taiwan

Architect: RHS+P

Developer: Fubon

Description: 37 storeys, luxury residential development with 4 levels of penthouse peaking at more than 150m

Total Construction Cost: TBC

Completion Date: 2010



Micasa – Kuala Lumpur, Malaysia

Architect: Surbana Architects

Developer: IGB Corporation

Description: 48-storey service apartment at Micasa, Jalan Tun Razak with a gross floor area of about 600,000 ft².

Total Construction Cost: TBC

Completion Date: TBC



HDB project at Bukit Panjang - Singapore

Architect: CSYA

Developer: HDB

Description: 26 storey HDB for 270 units of 4-Room and 5-Room flat with communal and parking facilities located at Bukit Panjang

Total Construction Cost: TBC

Completion Date: TBC



Pearl City – Kuala Lumpur, Malaysia

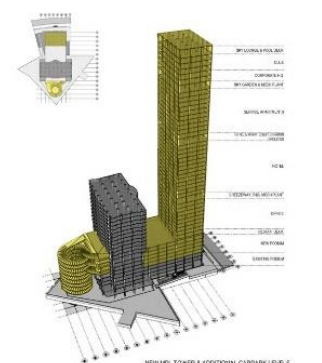
Architect: T.R. Hamzah & Yeang

Developer: Malaysia Pacific Corporation

Description: Proposed new tower @Wisma MPL

Total Construction Cost: TBC

Completion Date: TBC



SELECTED HIGH-RISE PROJECTS

Luxury Condominium at Jalan Kapas - Kuala Lumpur, Malaysia

Architect: Neri and HU

Developer: Naturemont Developments

Description: Civil, Structural and Geotechnical consultancy services for one block of luxury condominium at Jalan Kapas

Total Construction Cost: TBC

Completion Date: TBC



8 Conlay – Kuala Lumpur, Malaysia

Architect: RSP Architects

Developer: KSK Group

Description: The development consists of a 72-storey hotel tower and two residential towers with 62 and 57 storeys respectively which will become the tallest twisted twin towers in the world

Total Construction Cost: TBC

Completion Date: 2022



Lake Sapphire Puchong – Kuala Lumpur, Malaysia

Architect: WATG

Developer: IISY Land

Description: High rise high end mixed development alongside a large water body in Puchong, Malaysia

Total Construction Cost: TBC

Completion Date: TBC



Coronation Square - Johor Bahru, Malaysia

Architect: T.R. Hamzah & Yeang
DP Architects

Developer: Coronade Properties

Description: Mixed Development at Johor Bahru City Centre comprising medical suites, service apartments, offices and retail with a total GFA of over 4 million ft² on a 9.6 acre site.

Total Construction Cost: RM 800 million

Completion Date: 2022



JBCC 2 - Johor Bahru, Malaysia

Architect: Lead Architecture

Developer: Damansara Assets Sdn Bhd

Description: Preliminary structural study for a 320m iconic tower in Johor Bahru

Total Construction Cost: N/A

Completion Date: N/A



SELECTED HIGH-RISE PROJECTS

Imperial Lexis – Kuala Lumpur, Malaysia

Architect: VERITAS

Developer: Kuala Lumpur Cosmopolitan Sdn Bhd

Description: A mixed development of commercial, hotel and serviced apartments in a 54 storey tower in central KL

Total Construction Cost: RM 200 Million

Completion Date: TBC



MET – Kuala Lumpur, Malaysia

Architect: GSD Architects

Developer: Keystone Impetus Sdn Bhd

Description: Two office towers of 35 and 42 storeys in central KL

Total Construction Cost: TBC

Completion Date: TBC



IJM, The Light Phase 2a – Penang, Malaysia

Architect: DP Architects

Developer: IJM Perennial Development Sdn Bhd

Description: A large mixed development consisting of Retail, Convention Centre, Office and Hotels in Penang

Total Construction Cost: TBC

Completion Date: TBC



BB Plaza – Kuala Lumpur, Malaysia

Architect: DP Architects

Developer: Tradewinds

Description: Re-development of the existing BB Plaza and an underground connection to the proposed Bukit Bintang MRT Station.

Total Construction Cost: TBC

Completion Date: TBC



Competition for the HQ building of a renowned Korean carmaker – Seoul, Korea

Architect: DP Architects

Developer: Confidential

Description: The HQ building is part of a large scale urban redevelopment scheme consisting of a mixed development of offices, retails, arts centre, hotel and support facilities

Total Construction Cost: TBC

Completion Date: TBC



SELECTED HIGH-RISE PROJECTS

Wisma Damansara – Kuala Lumpur, Malaysia

Architect: WOHA

Developer: Selangor Properties Berhad

Description: A mixed development of 2 Office Towers (20 And 21 Storeys), a 22 Storey high Serviced Apartments above a 2 Storey Retail Podium and 4 storeys Car Park over a GFA of approximately 2 million ft² on a total land area of 8.72 acres

Total Construction Cost: RM 845 Million

Completion Date: TBC



Xian Residence - Kuala Lumpur, Malaysia

Architect: ZLG Design

Developer: Xian Property

Description: A 14 storey residential tower at Jalan Ara, Bangsar with a gross floor area of about 105,070 ft²

Total Construction Cost: RM 50 Million

Completion Date: TBC



Precinct 7 – Putrajaya, Malaysia

Architect: DTLM Design Group

Developer: United Malayan Land Bhd (UM Land)

Description: Mixed development consisting of offices, hotel, retail, serviced apartments located at Precinct 7, Putrajaya and the GFA (excluding basement parking) for this project is 3 million ft²

Total Construction Cost: RM 200 Million

Completion Date: TBC



Affin Bank headquarters – Kuala Lumpur, Malaysia

Architect: Arkitek MAA

Developer: Affin Bank Group

Description: The main structural frame of this 210m (3 basement car parks, 4 podium floors and 43-storey high-rise) is composed of RC perimeter columns and an off-centered core wall.

Total Construction Cost: TBC

Completion Date: 2021



SELECTED HIGH-RISE PROJECTS

Viettel HQ – Hanoi, Vietnam
Architect: Gensler
Developer: Viet Tel
Description: This is an interesting design for the headquarters of Viet Tel in Hanoi/Vietnam
Total Construction Cost: TBC
Completion Date: TBC



Competition on Vanke HQ Tower – Shenzen, China
Architect: WOHA
Developer: Vanke
Description: This is a competition for a headquarters building in China
Total Construction Cost: N/A
Completion Date: N/A



Competition for a HQ building in Taipei – Taiwan
Architect: RSH+P
Developer: FubonLand
Description: Invited competition for a headquarter building and a mixed development in Taipei
Total Construction Cost: TBC
Completion Date: TBC



Iconic megatall tower – Kuala Lumpur, Malaysia
Architect: Woods Bagot
DP Architects
Developer: Confidential
Description: Iconic 111-storey tower in the heart of KLCC
Total Construction Cost: TBC
Completion Date: TBC



All data contained in this information sheet is approximate and it is given in order to present a “feel” for the size and complexity of the projects featured. The information is not to be quoted or used for reasons other than assessing the track record and potential capability of Web Structures.